



# MT1379E (LQFP216-0.4) DVD MP Board for Sanyo PUH

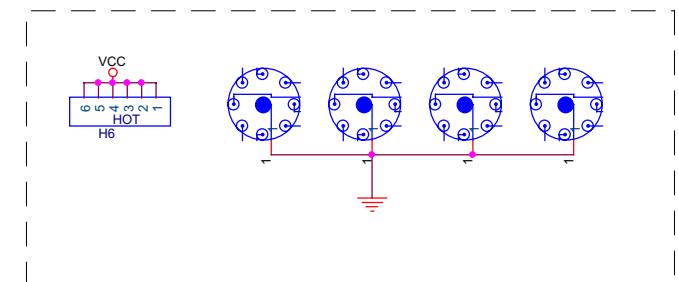
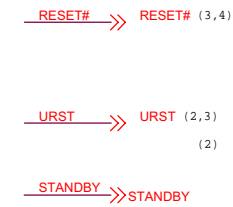
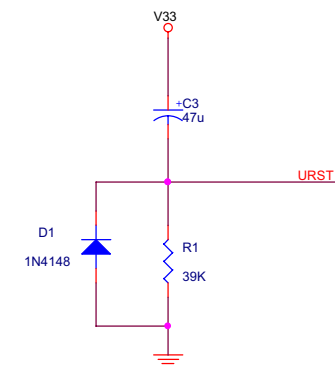
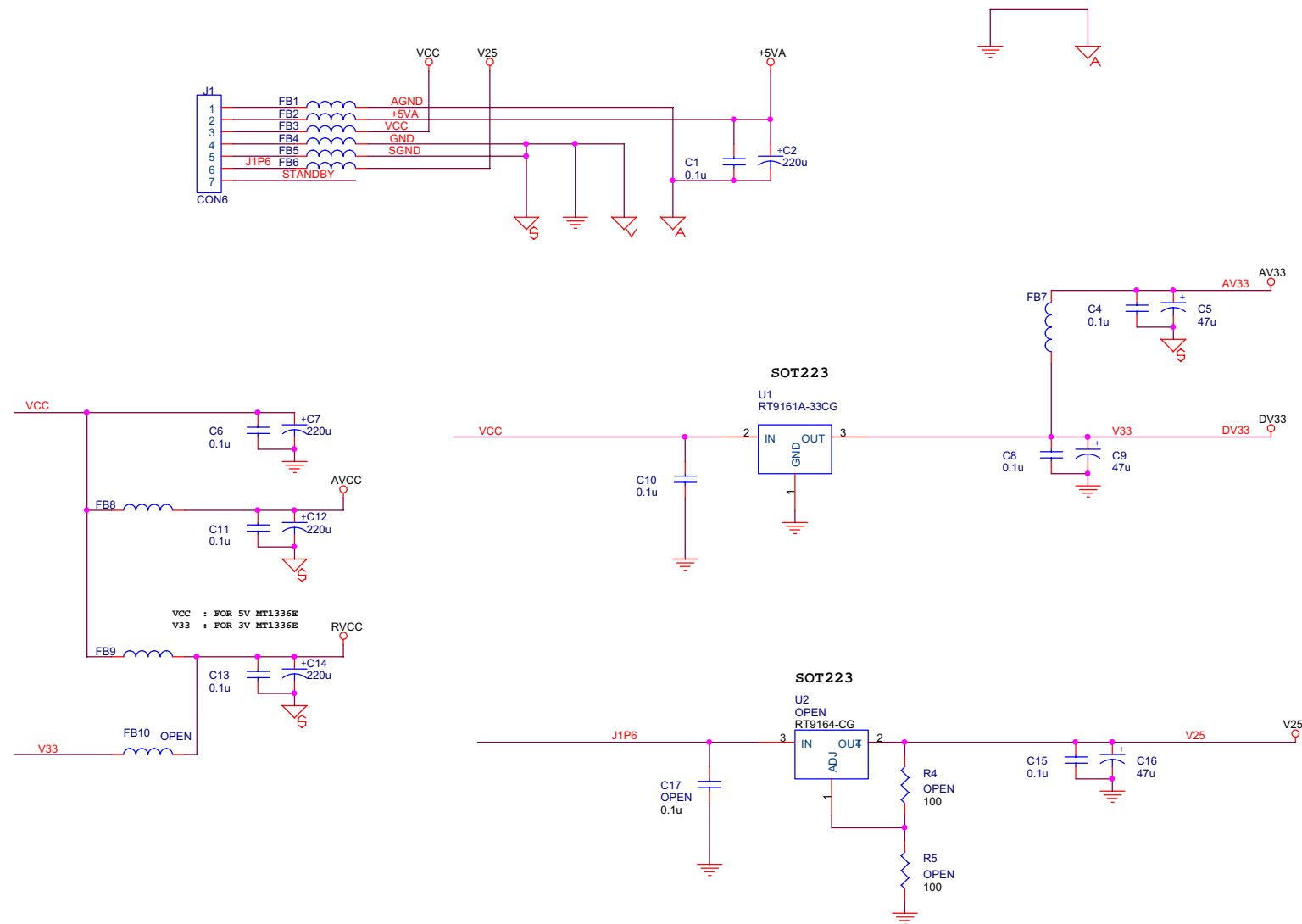
- 1 INDEX & POWER, RESET
- 2 RF / SERVO & MPEG - MT1336E / MT1379E
- 3 MEMORY - SDRAM, FLASH/EEPROM
- 4 AUDIO DAC CS4340 OR AV2188

## Layout consideration

1. Audio ground & digital ground should be connected at one point, either at power connector or underneath Audio DAC.
2. For EMC consideration, all power supply lines should have serial ferrite beads, laid as close to the chip as possible.
3. All the clock signals should have contain 33 ohm serial resistors, as close to the source as possible.
4. Digital ground should connected the chassis ground at one point.
5. Make sure digital signals do not cross the analog boundaries.

NAME	TYPE	DEVICE
VCC	Digital 5V	SUPPLY
RVCC	Servo 5V	MT1336E
AVCC	RF 5V	PICKUP HEADER
V33	Digital 3.3V	SDRAM, Flash, VideoDAC
DV33	Digital 3.3V	MT1379E
AV33	Servo 3.3V	MT1379E
V25	Digital 2.5V	MT1379E
+5VA	Audio 5V	Audio DAC

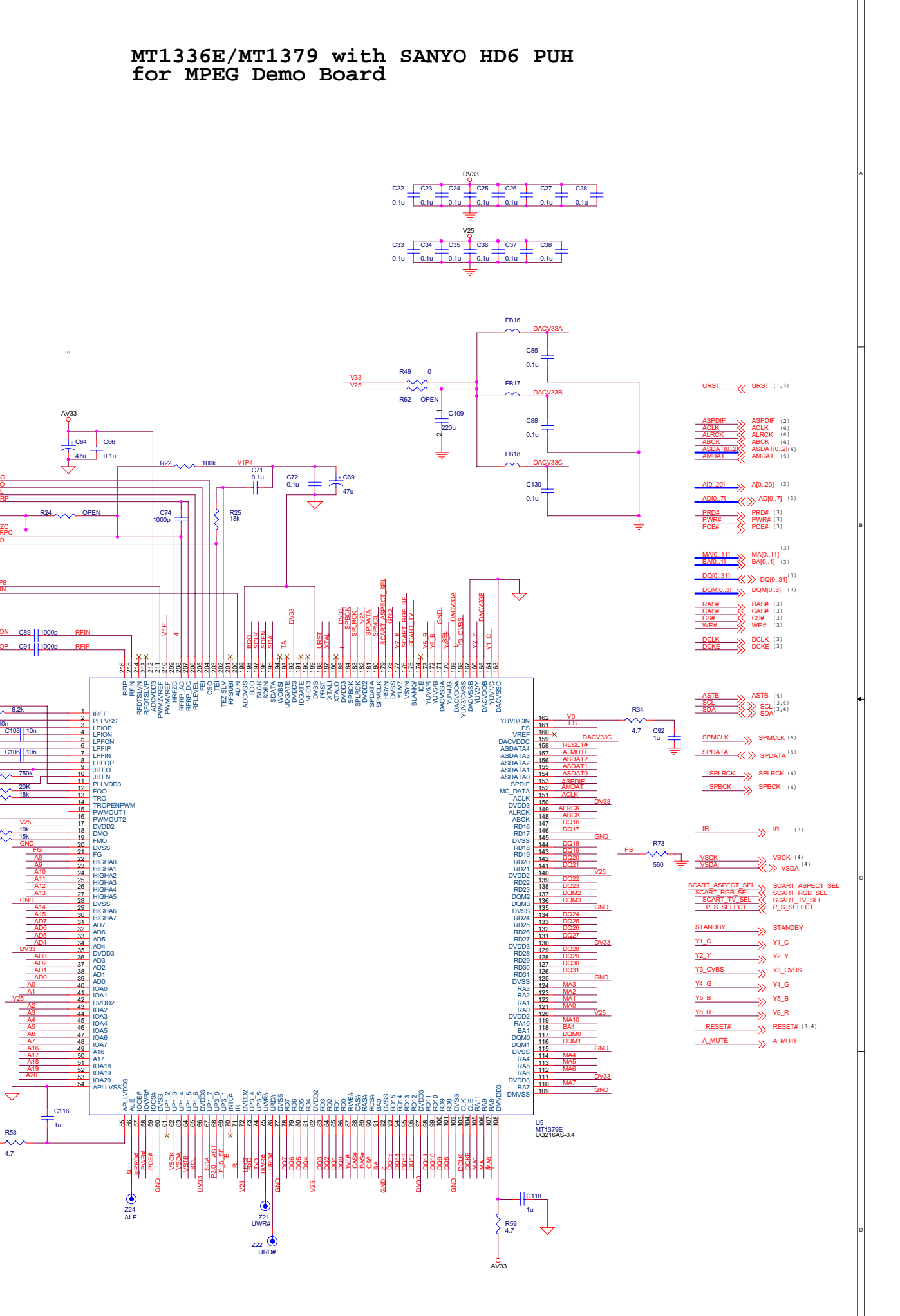
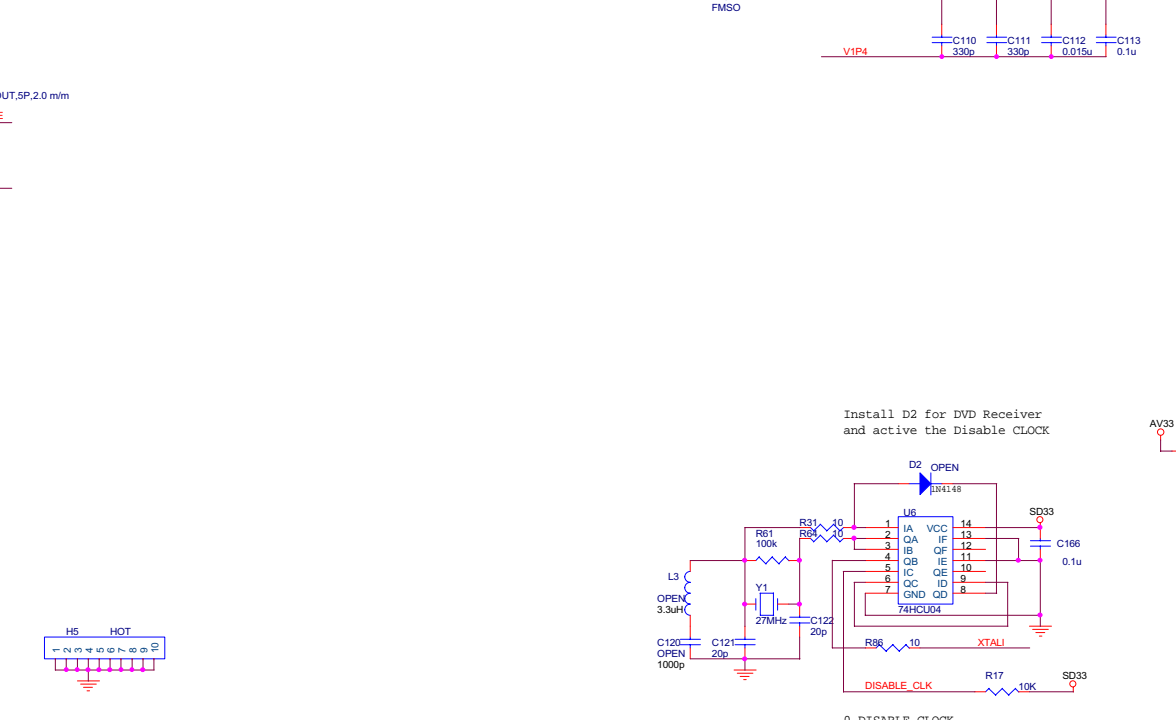
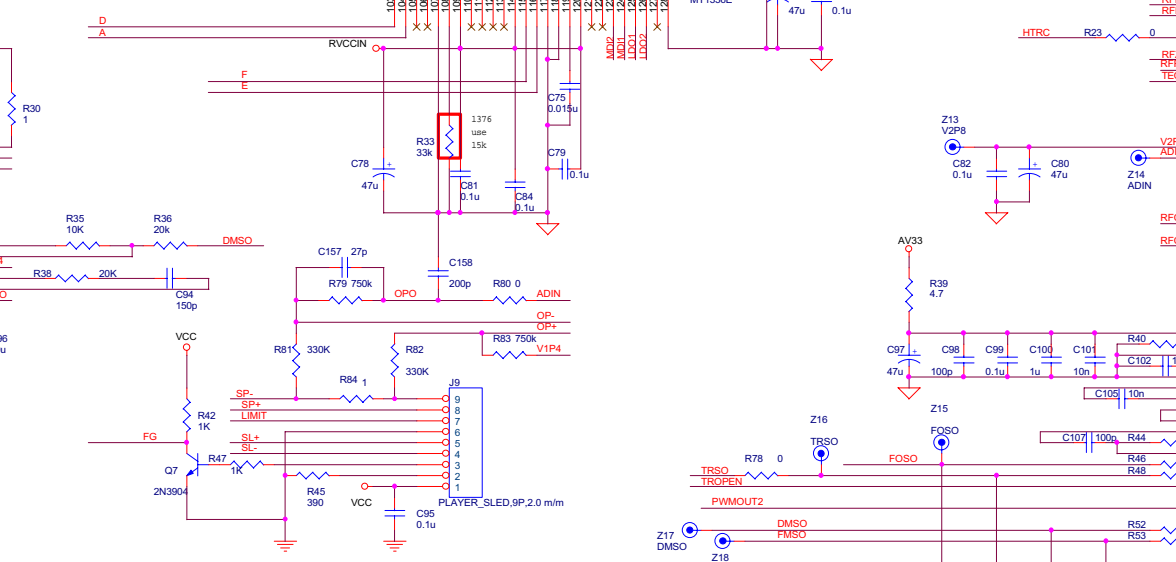
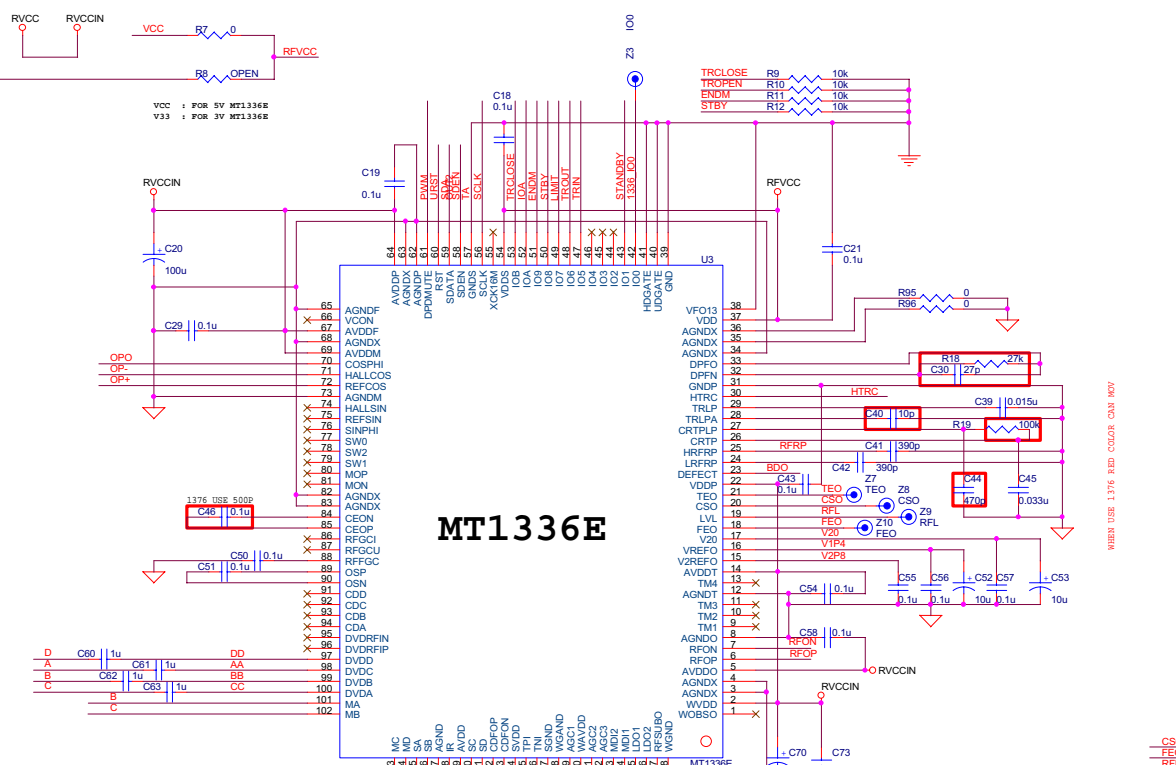
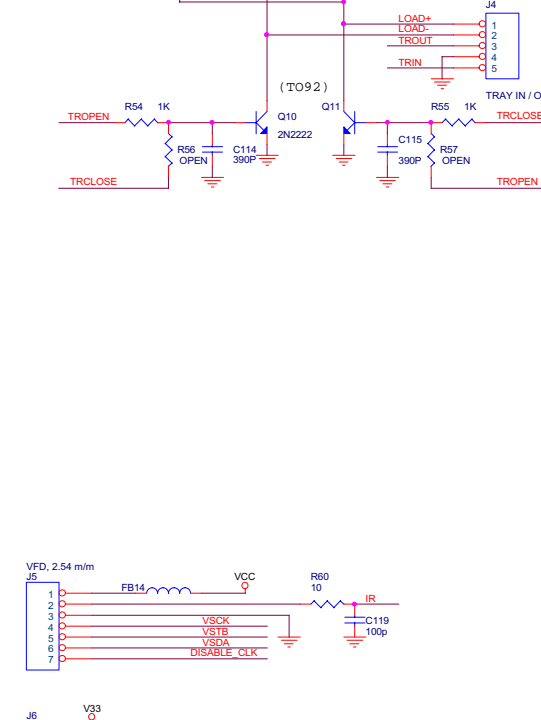
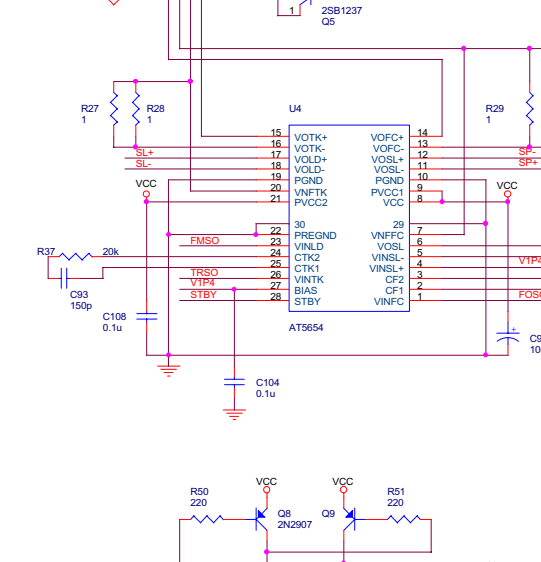
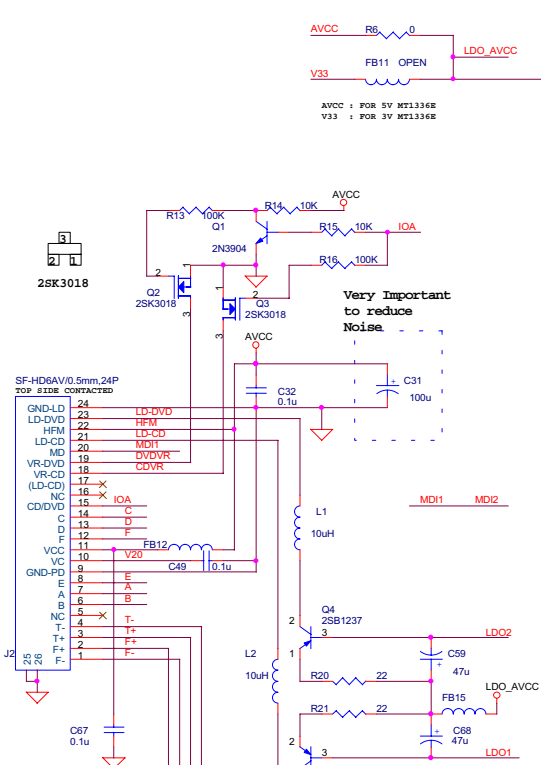
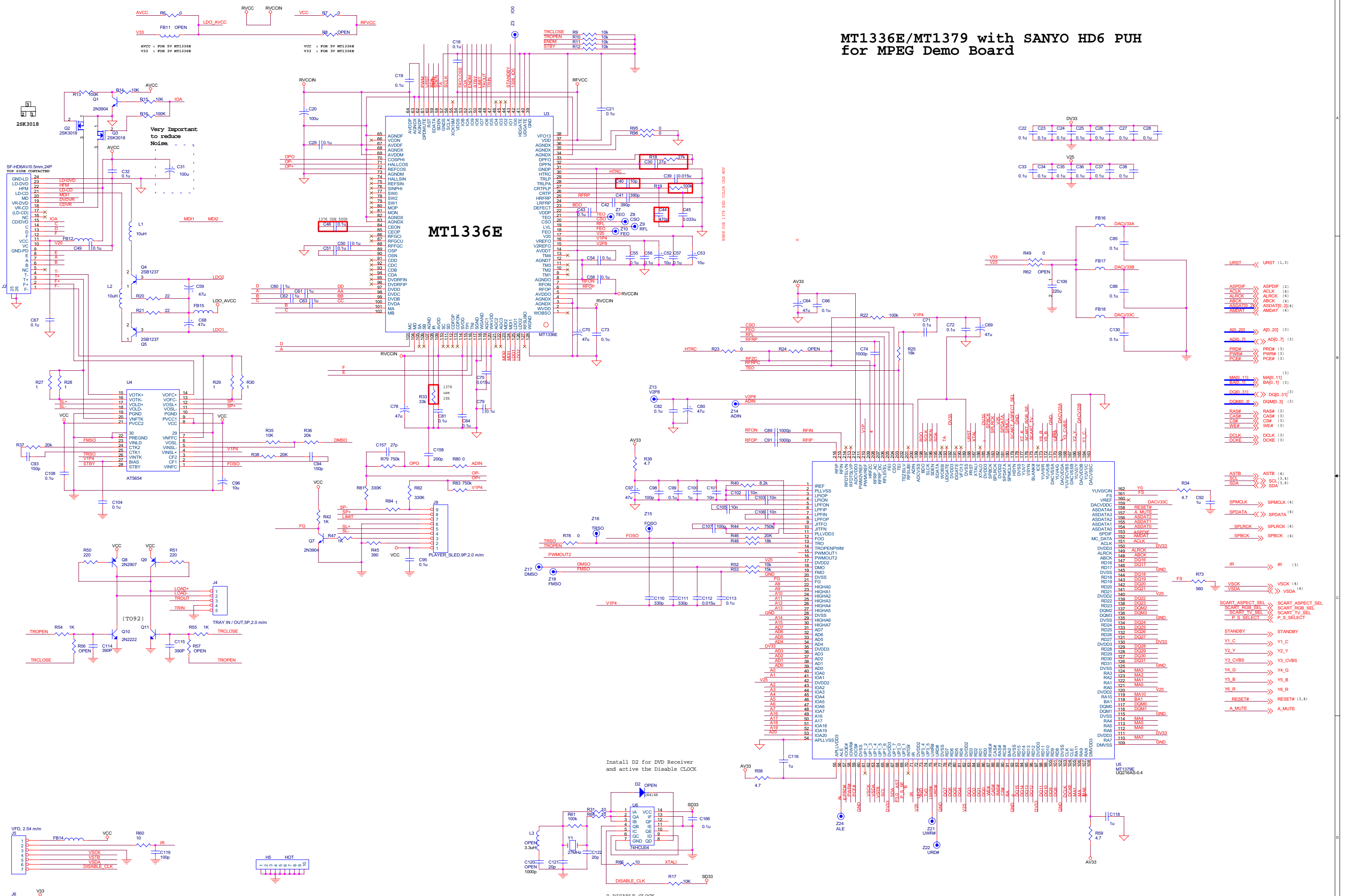
NAME	TYPE
GND	Digital Ground
SGND	Servo Analog Ground
AGND	Audio Ground
VGND	Video Ground



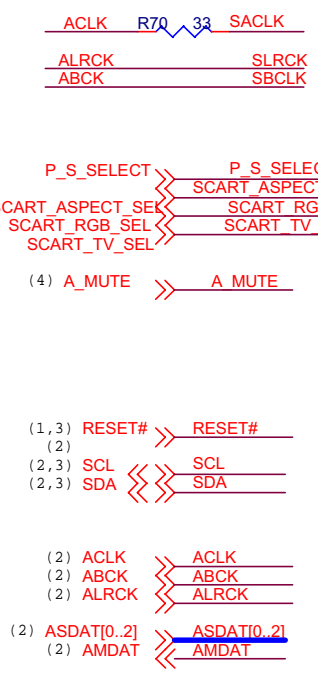
MediaTek Inc. / E-Smart

Title		Index
Size	Document Number	Rev
	MT1379E_216 MP Board (MT1379_HD6_E1T2.DSN)	E1T2
Date:	Monday, July 22, 2002	Sheet 1 of 4

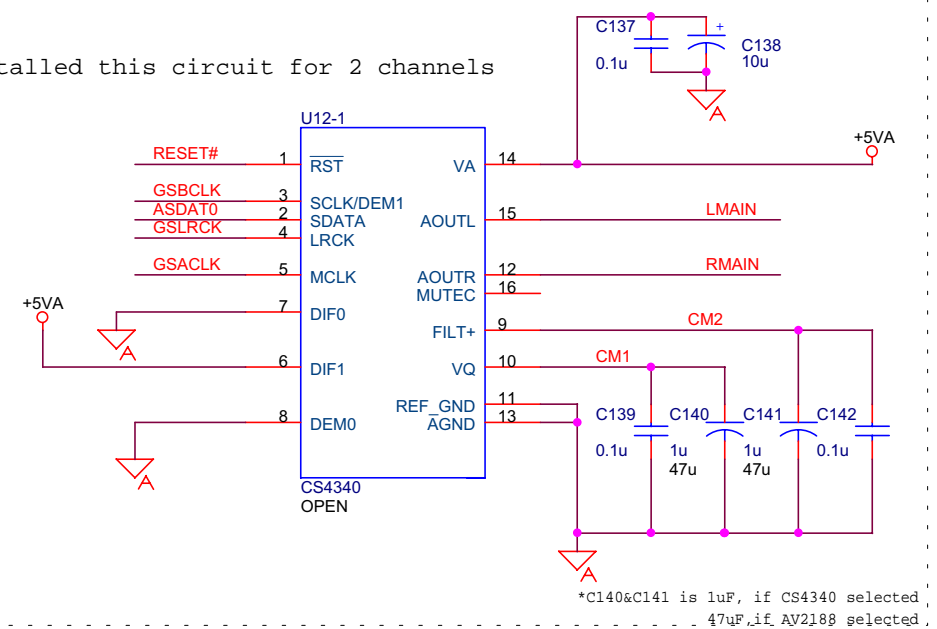
# MT1336E/MT1379 with SANYO HD6 PUH for MPEG Demo Board



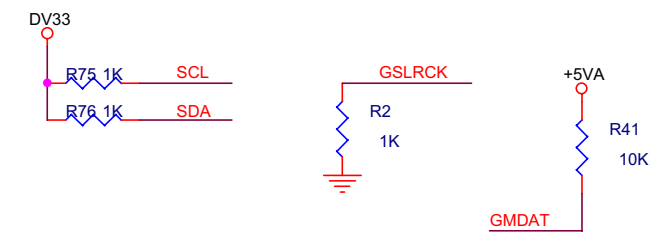
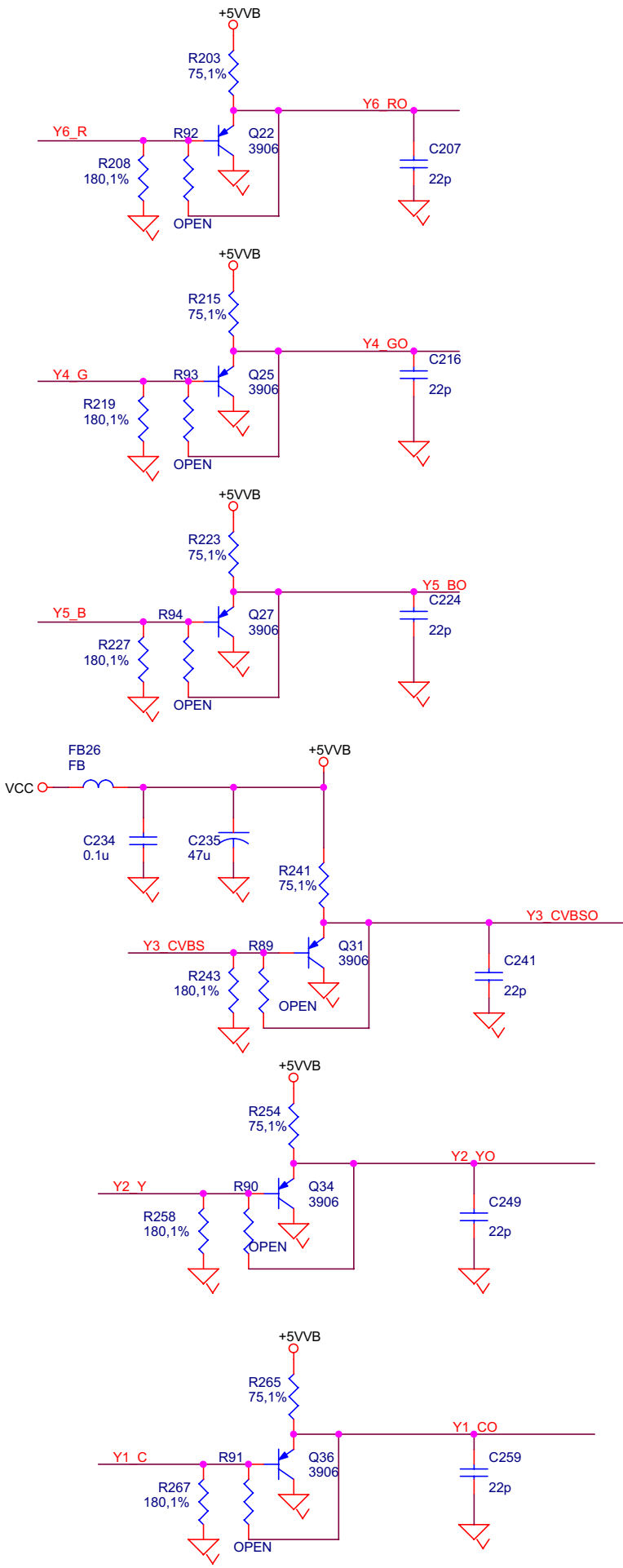
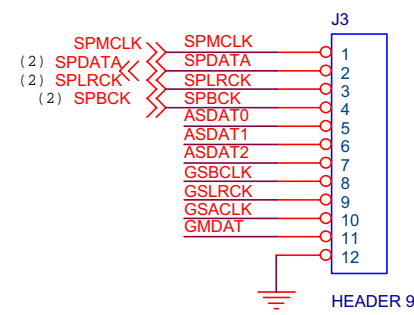
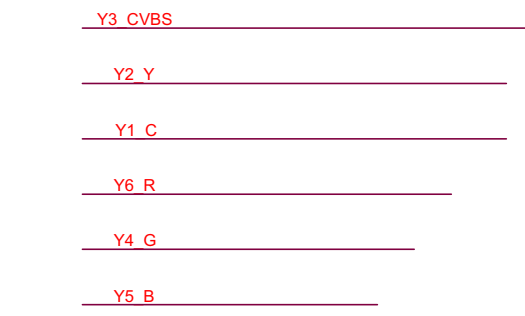
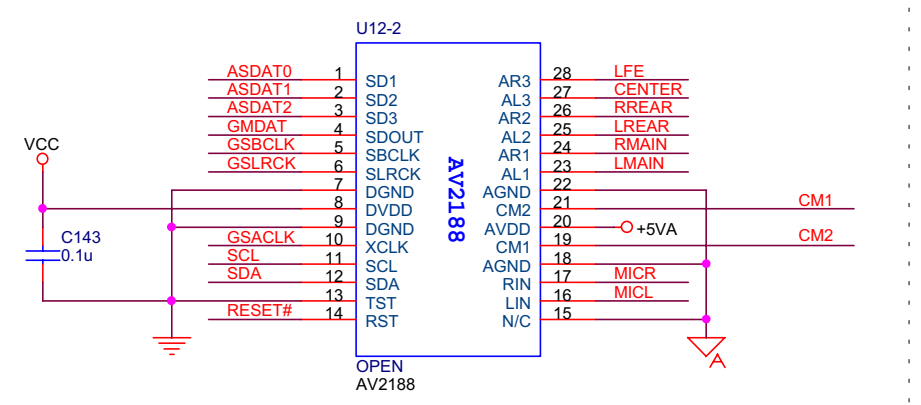




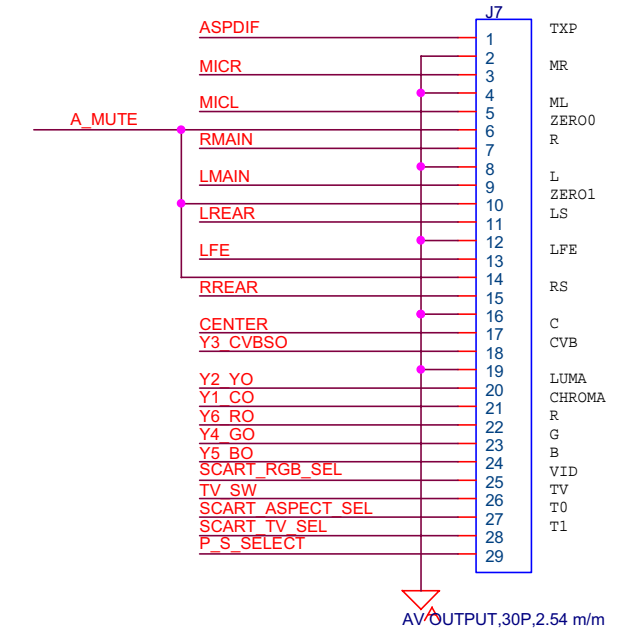
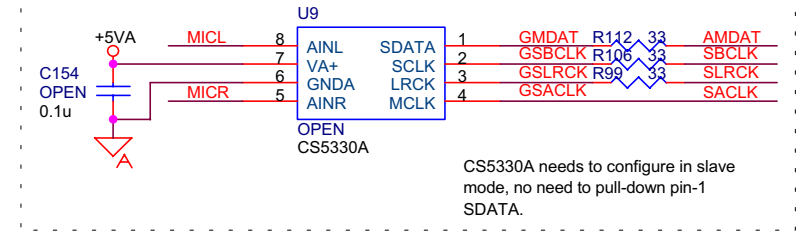
Installed this circuit for 2 channels



Installed this circuit for 5.1 channels



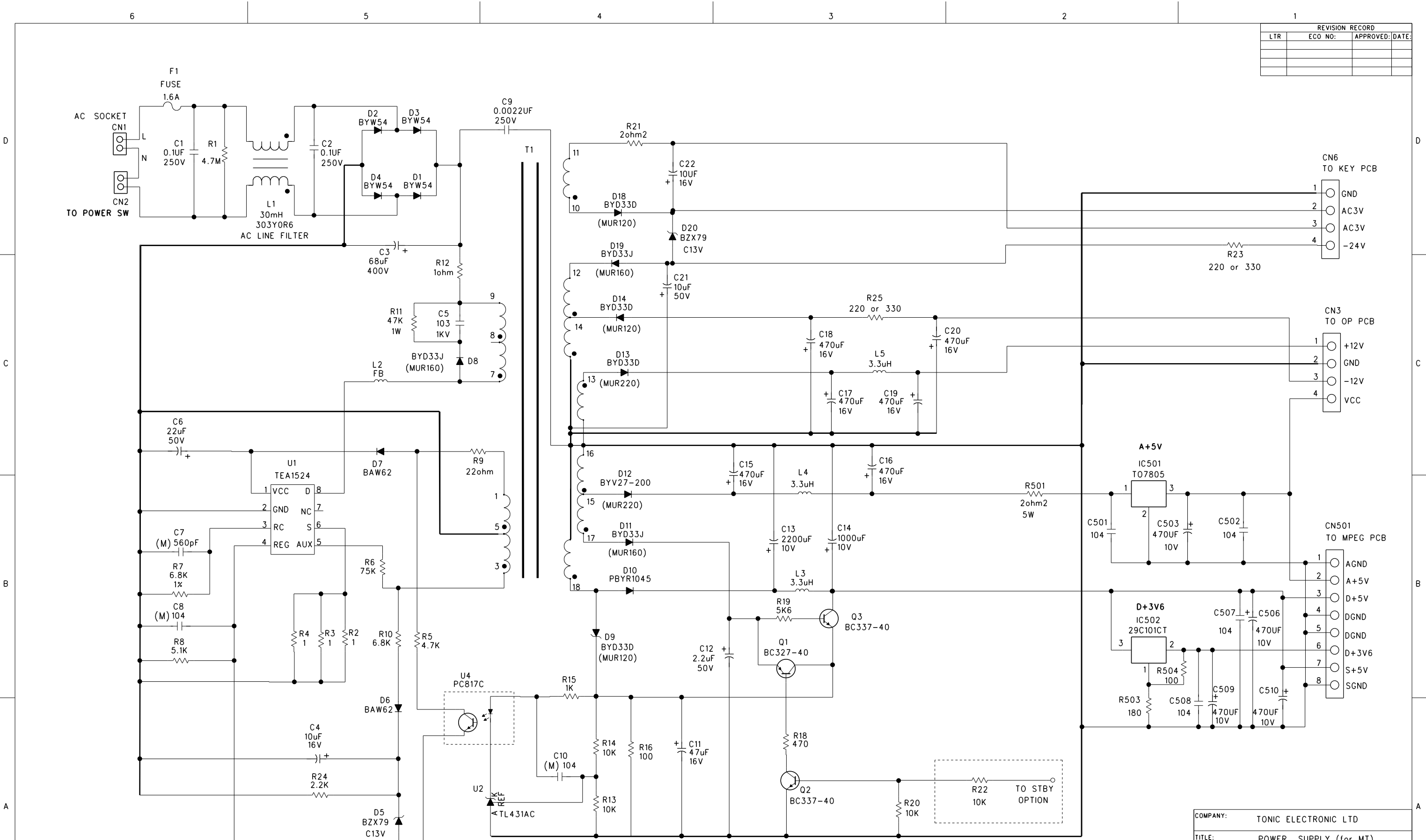
Installed this circuit for 2ch Karaoke



### MediaTek Inc. / E-Smart

Title		AV DAC
Size	Document Number	Rev
	MT1379E_216 MP Board (MT1379_HD6_E1T2.DSN)	E1T2
Date:	Monday, July 22, 2002	Sheet 4 of 4

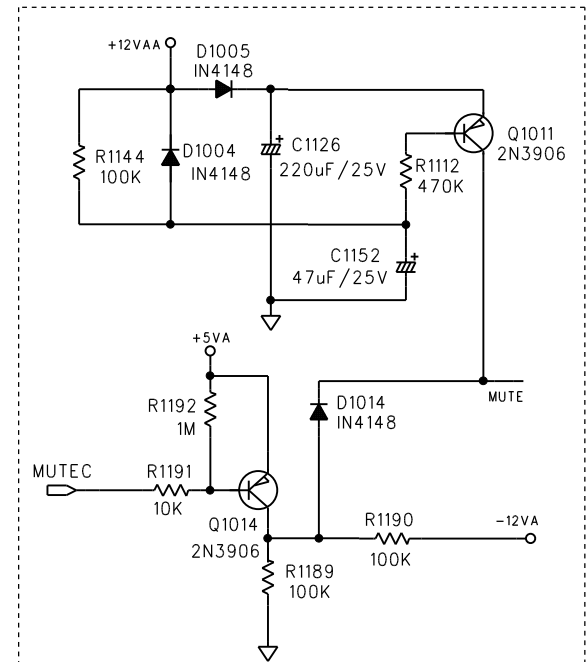
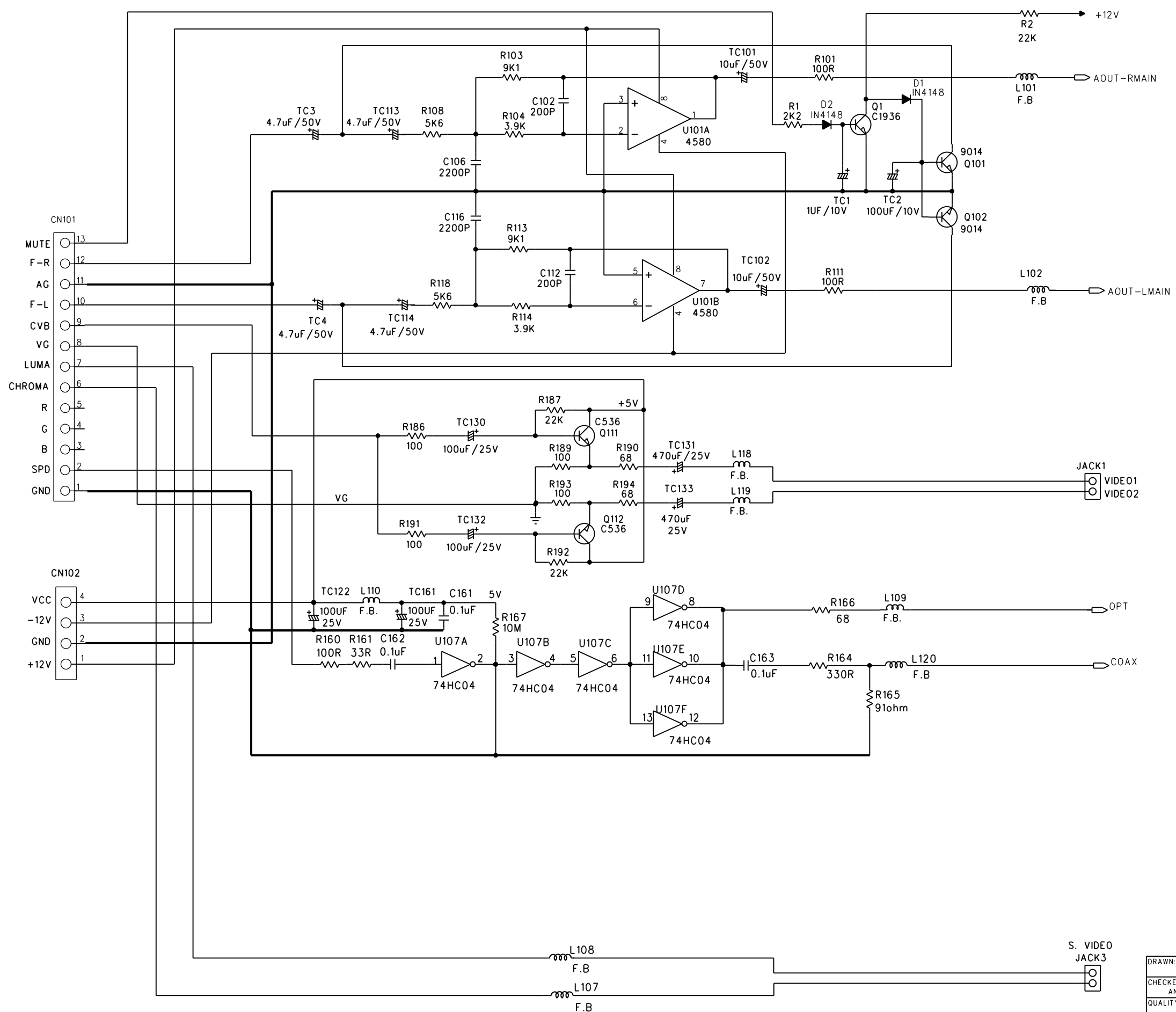
REVISION RECORD		
LTR	ECO NO:	APPROVED DATE:



COMPANY:		TONIC ELECTRONIC LTD	
TITLE:		POWER SUPPLY (for MT)	
DRAWN:		T123/T172/T179/T218/T221/T236/T252/T270	
CHECKED:		T289/T290/T291/T306/T319/T330	
CODE:	SIZE:	DRAWING NO:	REV:
A	A4	PCB: 001-01720-450	
RELEASED:	DATED:	TRANSFORMER:	018-01722-520
SCALE:		SHEET: 1 OF 1	

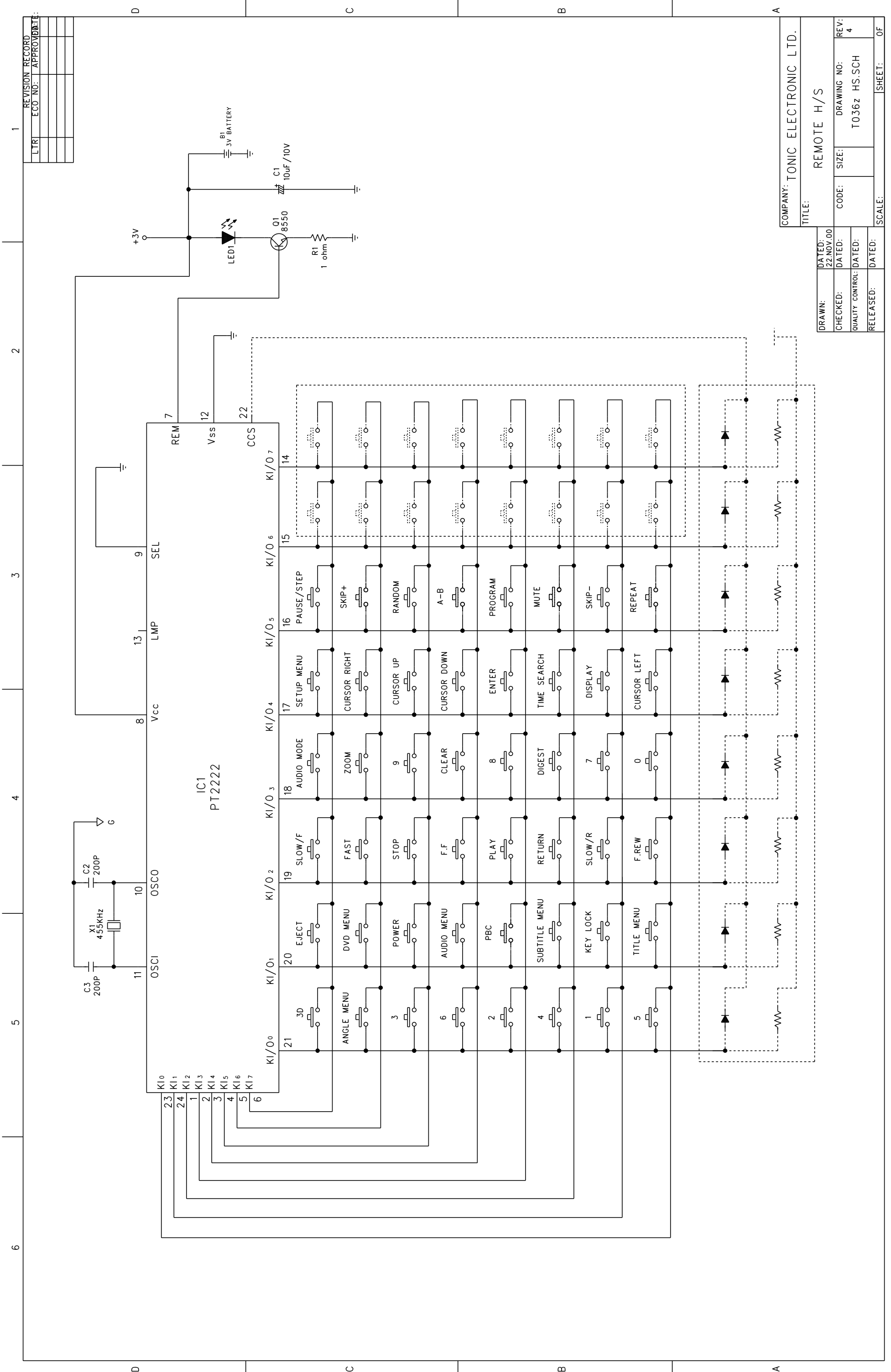


REVISION RECORD			
LTR	ECO NO:	APPROVE	DATE



DRAWN:	P.T.LEONG	DATED:	8/NOV/2002
CHECKED:	ANTHONY TO	DATED:	8/NOV/2002
QUALITY CONTROL:	DATED:		
RELEASED:	DATED:		

COMPANY:				TONIC ELECTRONIC LTD.			
TITLE:				OUTPUT			
				(w/o yuv)R2			



REVISION RECORD	
LTR	ECO NO. APPROV DATE

COMPANY: TONIC ELECTRONIC LTD.	
TITLE: REMOTE H/S	
DRAWN: 22.NOV.00	REV: 4
CHECKED:	DRAWING NO: T036z HS.SCH
QUALITY CONTROL:	SIZE: HS.SCH
RELEASED:	SCALE:
	SHEET: OF